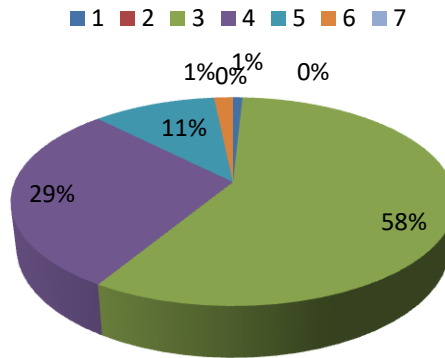


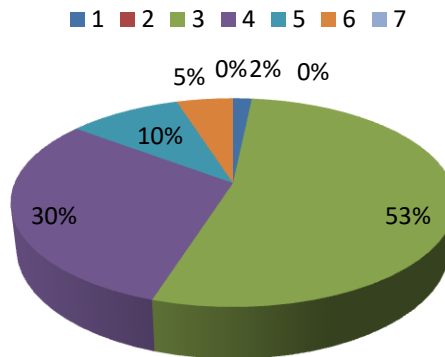
<b>Ganga Institute of Education, Kablana</b>						
<b>( STUDENT SATISFACTION SURVEY) 2020-21</b>						
<b>S. No.</b>	<b>Parameters</b>	<b>A Very Good</b>	<b>B Good</b>	<b>C Average</b>	<b>D Poor</b>	<b>E Very Poor</b>
1	<b>Availability of Classroom Infrastructure.</b>	70	35	13	2	0
2	<b>Books &amp; Material Available in Library.</b>	65	37	12	6	0
3	<b>Availability of Internet Facility in Library.</b>	60	35	20	5	0
4	<b>Availability of Health Care Facility.</b>	55	30	15	14	6
5	<b>Availability of Sports Equipment &amp; Play Grounds.</b>	57	28	14	18	3
6	<b>Availability of Civic Amenities as Toilets, Parking, Canteen etc.</b>	42	32	16	14	16
7	<b>Conditions and Use of Laboratories.</b>	52	28	26	10	4
8	<b>Interaction with Administration.</b>	67	23	20	7	3
9	<b>Availability of Scholarship.</b>	70	22	28	8	2
10	<b>Availability of Fee Concession.</b>	58	18	22	10	12
11	<b>Maintenance of Discipline in the College.</b>	74	24	18	2	2
12	<b>Organization of Co-Curricular Activities.</b>	67	23	20	7	3
13	<b>Organization of Extension Lectures/Seminars/Workshops.</b>	70	22	28	8	2
14	<b>Organization of Activities in Collaboration with NGO's &amp; GO's.</b>	57	28	14	18	3
15	<b>Organization of Orientation Programme for Students Before Starting of Session.</b>	65	37	12	6	0
16	<b>Guidance Provided for Choice of Optional Subject.</b>	67	23	20	7	3
17	<b>Training Provided for Use of Computer.</b>	55	30	15	14	6
18	<b>Internal Evaluation System.</b>	74	24	18	2	2
19	<b>Role of Students Grievance Cell.</b>	43	31	16	14	16
20	<b>Overall Rating about the College</b>	72	22	14	8	4

N=120

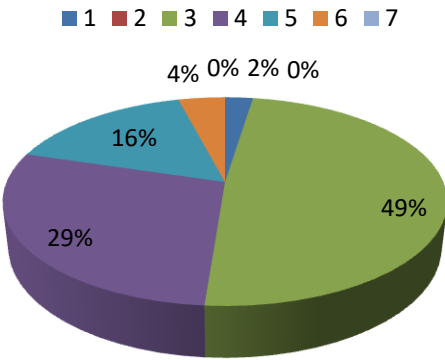
### 1. Availability of Classroom Infrastructure.



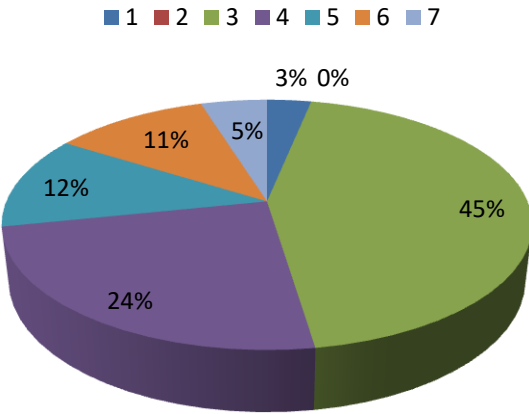
### 2. Books & Material Available in Library.



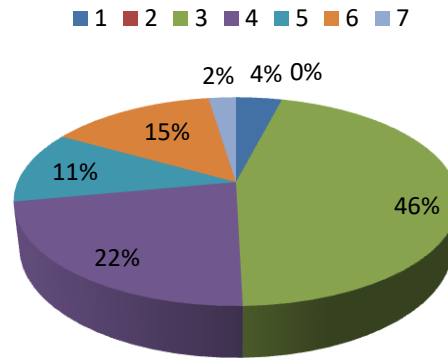
### 3. Availability of Internet Facility in Library.



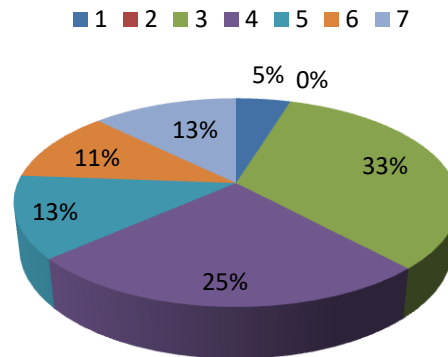
### 4. Availability of Health Care Facility.



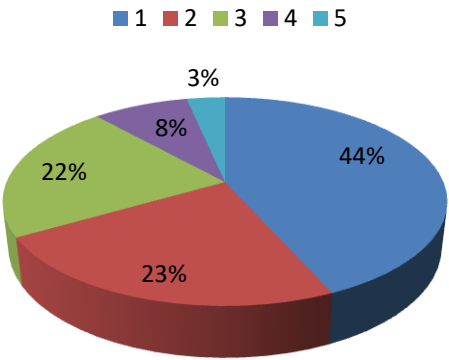
### 5. Availability of Sports Equipment & Play Grounds.



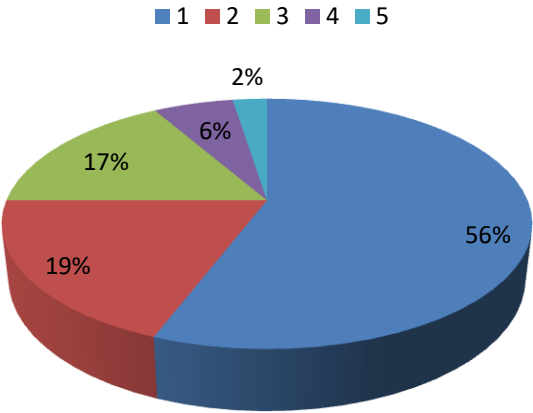
### 6. Availability of Civic Amenities as Toilets, Parking, Canteen etc.



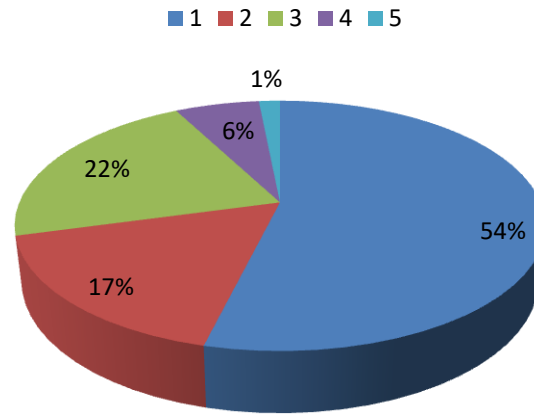
### 7. Conditions and Use of Laboratories.



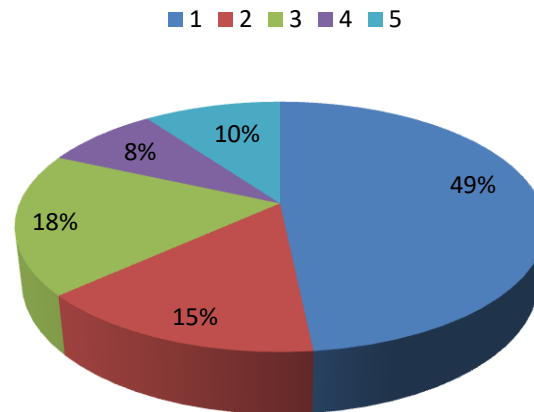
### 8. Interaction with Administration.



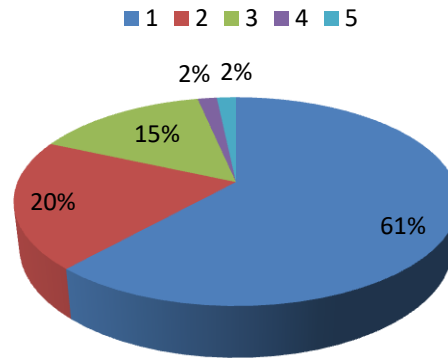
### 9. Availability of Scholarship.



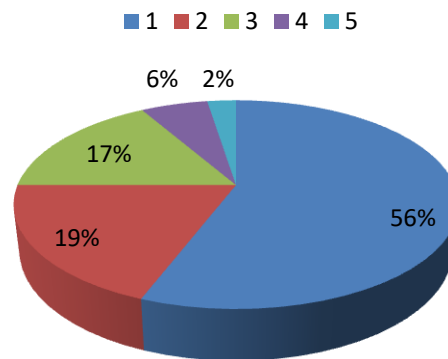
### 10. Availability of Fee Concession.



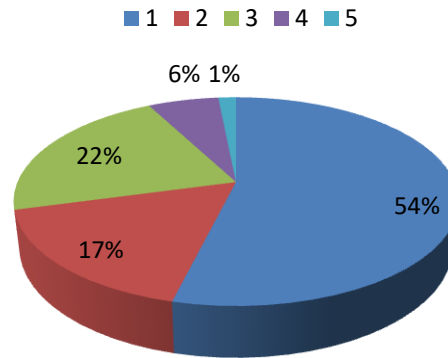
### 11. Maintenance of Discipline in the College.



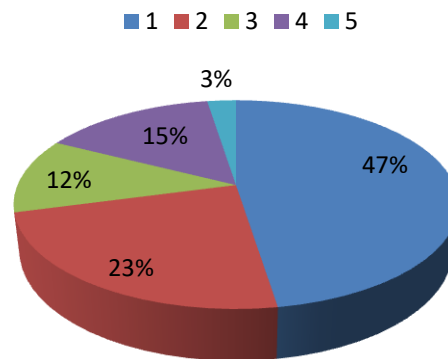
### 12. Organisation of Co-Curricular Activities.



### 13. Organisation of Extension Lectures/Seminars/Workshops.

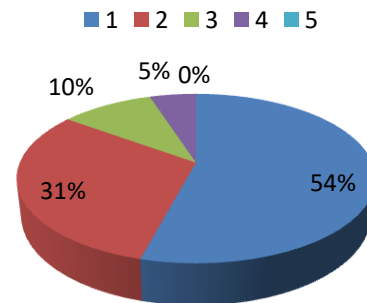


### 14. Organisation of Activities in Collaboration with NGO's & GO's.

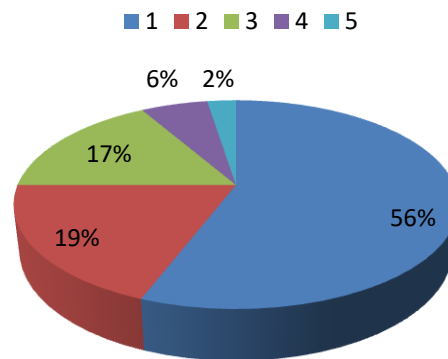




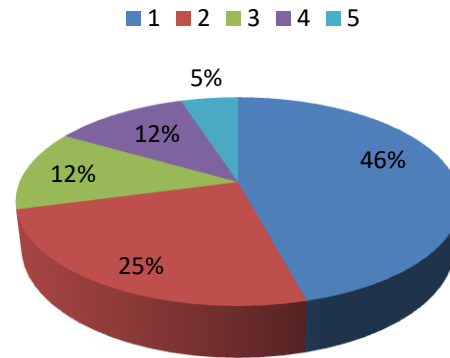
### 15. Organisation of Orientation Programme for Students Before Starting of Session.



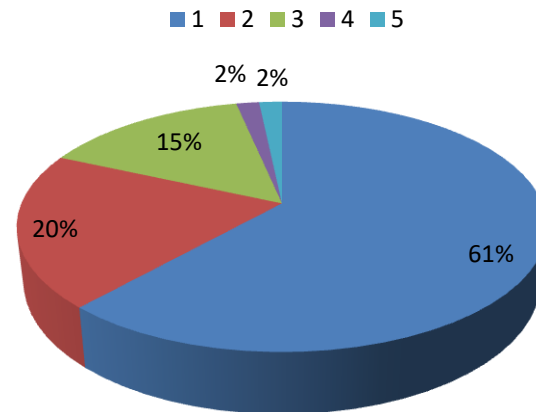
### 16. Guidance Provided for Choice of Optional Subject.



### 17. Training Provided for Use of Computer.

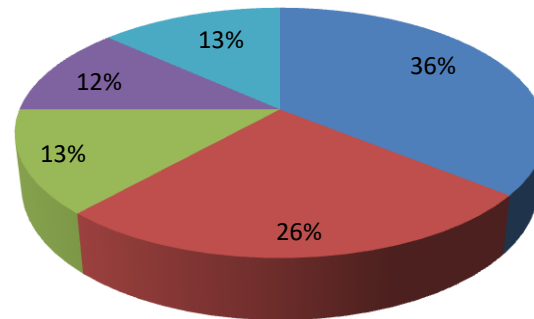


### 18. Internal Evaluation System.



### 19. Role of Students Grievance Cell.

■ 1 ■ 2 ■ 3 ■ 4 ■ 5



### 20. Overall Rating about the College

■ 1 ■ 2 ■ 3 ■ 4 ■ 5

